

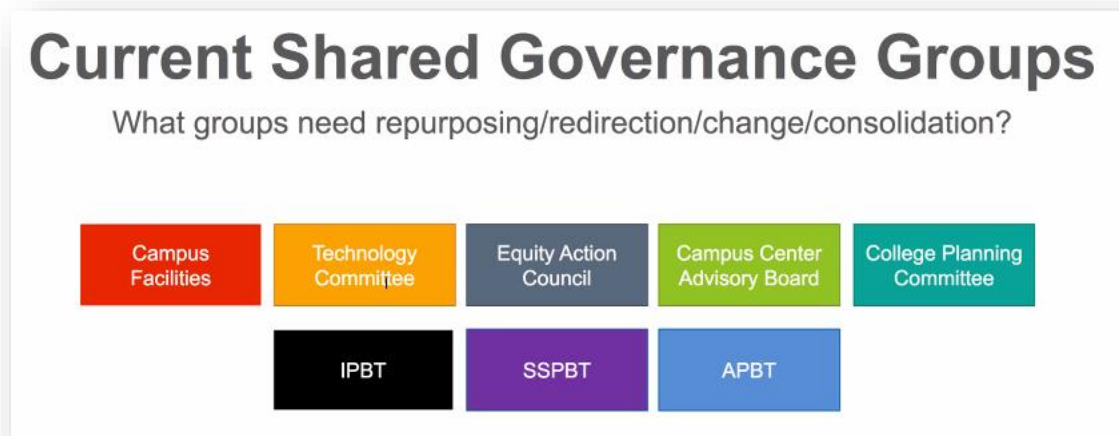
4-8-2021

Shared Governance Task Force

<https://foothilldeanza.sharepoint.com/sites/dagovtf>

https://foothilldeanza.sharepoint.com/:w:/s/dagovtf/EX6k7nmKebBEkBB7fYLgh5kBYF0TzQ2Eu_uSKFfkj91LmA?e=MeeWKb

Look at other colleges

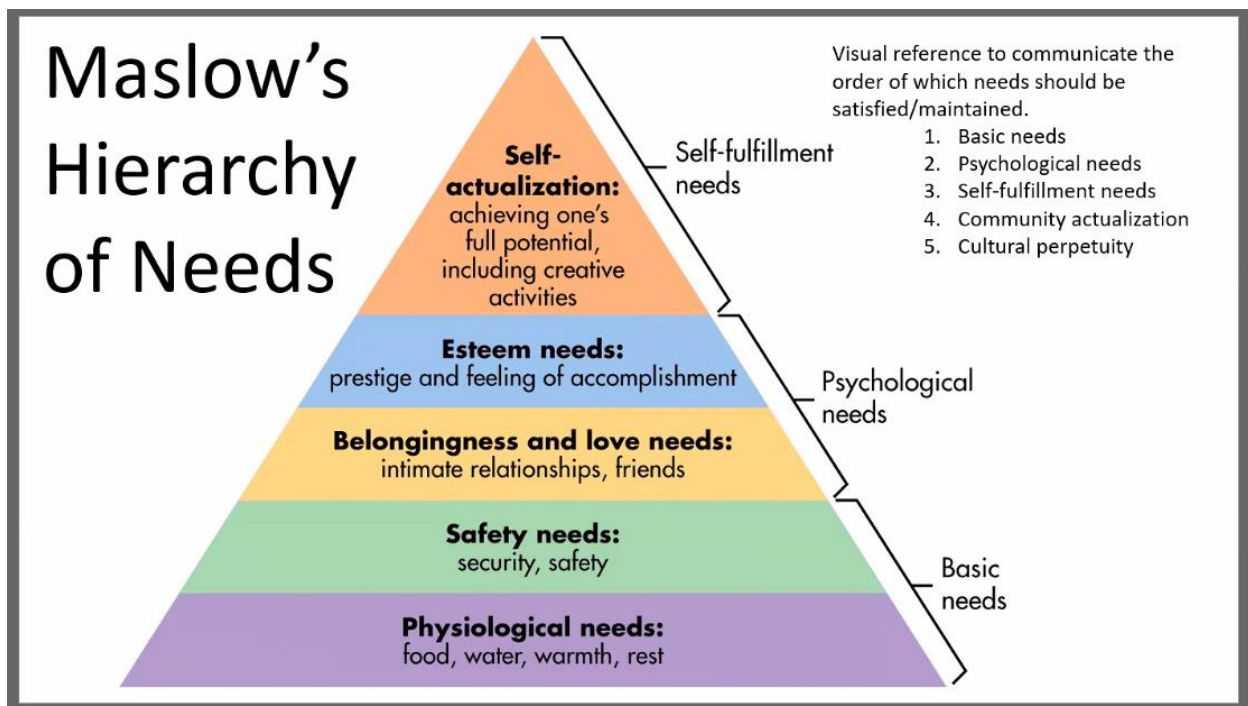


1. Guiding Principles
2. Communication (educate new people, re-training, reminders)
3. Review Structures (should it be silo or collective group?) right now we are in silo:
 - SSPBT
 - IPBT
 - APBT
 - Dawn Li (training)
4. Research timelines and then have to get to college counsel
5. Research how representation is changed out routinely?
6. How does CTE involvement impact?
7. Research Outside Colleges (**Jim and Keri**)
8. Get IEEPI IIPR Group IIPi
9. Funding Review
 - a.
 - b. What is required to have by law

- c. How does funding get allocated from District to Colleges
- d. DSPS – State mandated
- e. Categorical
- f. Fund 14? Staff
- g. IPBT
 - i. Strong Workforce
 - ii. Perkins
 - iii. Lottery
 - iv. Instructional Equipment

<https://www.deanza.edu/gov/review/>

CTE



Internal Review

External Review – other Colleges

Planning?

Budget Cuts

Research: Budget Splits – why/justifications (from District to both Colleges)

Research: Decision Making Process

Funding of the college as a whole?

Global decisions

District level decisions

Membership

Student Voices

Communication

Is the problem the money allocated (the amount of money)?

Or, is it perception of where the money goes?

Where should the money go?

How do programs get supported?

Proposals for positions.

https://foothilldeanza.sharepoint.com/:w:/s/dagovtf/EX6k7nmKebBEkBB7fYLgh5kBYF0TzQ2Eu_uSKFfkj91LmA?e=MeeWkb

ERP committees (eyes from the outside looking at what we do).